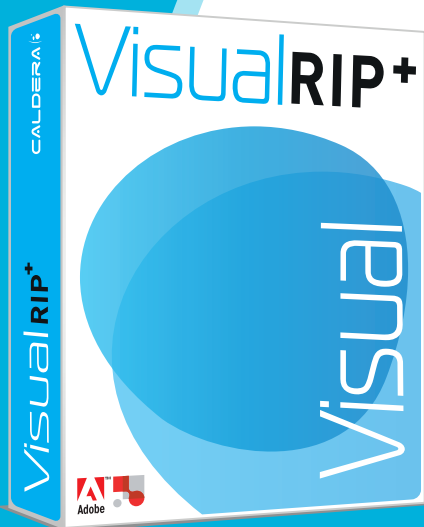


# VisualRIP+

## VERSION

by CALDERA



Built for speed, reliability and flexibility, our solutions represent the cutting edge of wide-format production software, supporting all popular large-format print manufacturers.

Incorporating key features such as automatic nesting (both true shape and regular), advanced tiling, ICC color support and task automation, Caldera is a powerful tool for print operators looking to streamline their production across multiple devices, while simultaneously achieving consistent color output and saving ink and media on all their prints.

Our industry award winning solution for Print-and-Cut Workflow, VisualRIP+ is the preferred choice of some of the most successful print shops around the world.

Developed for medium- to high-production, multiple device environments.

## MASTER-SLAVE ARCHITECTURE

With Caldera's Primary-Replica architecture, a single master RIP computer (Mac or PC) can manage unlimited RIP or printing replica devices for scalable distributed computing over a network. Caldera is a scalable RIP solution to drive all the printers and cutters on your network.

### USER BENEFITS

- Consolidates control to a single platform
- Reduces training time and confusion
- Increases throughput and color homogeneity
- Purchase one update for all machines
- Cost-efficient

## CUT WORKFLOW

Caldera's Cut Workflow drives the industry's best cutters, whether contour or XY devices.

- Ensures precision cutting for your Cut Workflow
- Manages multiple contours in one file
- Generates a machine-specific file for each individual job
- Automatically sets up cut marks for specific devices
- Guides the cutter along a document's embedded contours
- Optimize your media usage with true shape nesting

## COLOR MANAGEMENT

Caldera's color solutions give you high quality, 'on the mark' output. Our software packages include an easy and powerful color management solution based on standard ICC technology.

### Calibrate your print configuration for superb color precision

Our EasyMedia step-by-step wizard allows you to specify the color gamut for any print configuration with a given media in no time at all. Thanks to the simple steps in EasyMedia to calibrate transition, linearization and ink use, printers can fine-tune their color processing for optimum stability and consistency across their output.

- Create your ICC profiles
- Download profiles from our online library

## PRODUCTION OPTIMIZATION

Making money in the ink-jet printing business means having the right dashboards to check margins and productivity. VisualRIP+ includes tools that will give printers better insight into their operations.

### Improve your margins with CostView: see an overview of all your costs before you print



Within the simple Web browser interface, production managers can view jobs in the print or cut spooler in real-time, monitor ink and media usage and costs, plus add additional costs automatically.

# What's in the box?

## FEATURES

Printer Control Type  
Printer Set-up  
Cut workflow capability  
Print/Production Volume  
Printer Formats  
Inkjet Types

### Applications

### PDF WORKFLOW

Adobe PDF Print Engine 3.3 

### PRODUCTIVITY

Multitask Environment  
RIP & Print while you Print  
HQ Preview  
Step & Repeat  
Tiling+  
SignMark  
Layout and Compose  
VisualUser  
VisualRemote

### COLOR MANAGEMENT

ICC Support  
Spot Color matching & White Ink  
EasyMedia  
Color Libraries (Pantone, HKS, RAL, NCS)  
Online Standard Color Profile Library  
Custom InkSet

### AUTOMATION

Task Automation  
Hot Folders  
Nest-O-Matik  
QuickPrints

### CUT WORKFLOW

Cut Marks  
Contour Nesting  
VisualCut  
GrandCut  
Trim-O-Matik

### PRODUCTION OPTIMIZATION

QR Codes  
PrintBoard  
CostProof  
CostView  
InkPerformer

### QUALITY MONITORING

Print Standard Verifier (FOGRA)  
Print Standard Verifier (G7)

## VISUAL

Direct  
Multiple devices  
Roll Cutter  
Mid to High  
Roll-to-Roll  
Acqueous, Eco-Solvent, Solvent,  
Latex, UV, Dye-sub  
Signs, Digital Graphics & Visual  
Communications, Textile Printing



\* Special editions have specific content



## CONTACT US!

FREE CALDERA EVALUATION VERSIONS ARE AVAILABLE ON OUR WEBSITE:

Demonet : <http://demonet.caldera.com>



WATCH OUR VIDEOS ON CALDERA TV!  
Caldera TV : <http://caldera.tv>

Linux



and Mac

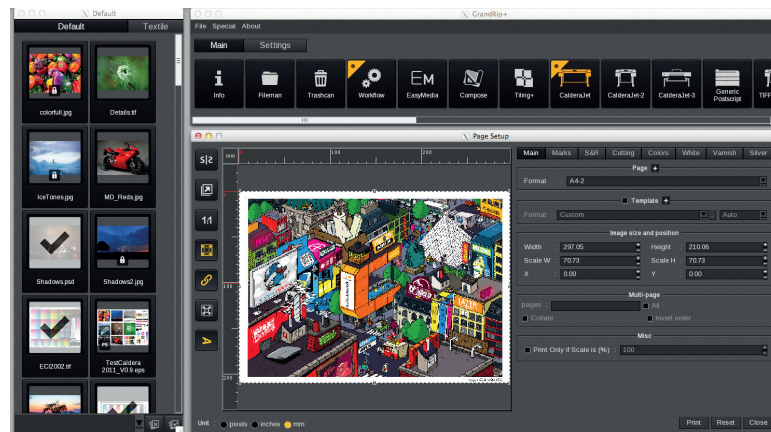


are the operating systems chosen by Caldera for optimal resource management and quality workflow.

# 10 reasons to upgrade to Version 10

The latest edition of Caldera's award-winning imaging software puts a re-imagined user interface and streamlined core architecture at the heart of a number of upgrades that deliver massive productivity to all types of wide-format print business.

V10 harnesses the latest version of APPE and a wealth of new functions to create a suite that enables blistering throughput speeds and a hitherto unseen fluidity of control for operators, making it the RIP to beat for graphic arts professionals.



## #1 ContourNesting, Tex&Repeat and PrintBoard are now included!

Version 10 opens up exciting new market opportunities for Caldera users: textile, wallpaper, ceramics, glass, wood and CAD.

## #2 Increase your RIPping speeds

Unleashing the power of smarter algorithmic processing, Version 10 RIPs up to two times faster than previous versions.

## #3 Receive live updates

Update notifications about builds and versions are now automated via an online service, ensuring that critical updates reach the user rapidly.

## #4 Set up faster workflows

The new QuickPrint feature allows a user to send a job to print using a preset configuration.

## #5 Create advanced tiling projects

New & improved Tiling+ now makes it possible to create tiles of different sizes, allowing users to access new markets, such as multi-canvas applications.

## #6 Enjoy our new GUI

Designed for ease of use, the new, fully-featured Version 10 interface allows users to focus only on live tasks. Newly designed icons and markers have been standardized to create a fresh modern style within the GUI.

## #7 Identify Jobs with QR codes

V10 users can add QR Codes alongside a print, with an automated cut path, to enable easy removal as required.

## #8 Add grommets easily

Grommets and eyelets can be easily added to artwork from within the Print module.

## #9 Download new profiles

Profiles can be accessed from within a new online library, using EasyMedia.

## #10 RIP larger files

Through the inclusion of APPE 3.3, which carries with it all the benefits of 64bit data handling, users can now RIP massive files that were previously hindered by a lack of on-board memory. This means users can leverage their processor's full active memory to provide additional efficiencies across the full job queue.



## SYSTEM REQUIREMENTS

CALDERA



CALDERA - 1 rue des Frères Lumière - P.A. d'Eckbolsheim - BP 78002 - 67038 Strasbourg Cedex 2 - France  
www.caldera.com - Tel. +33 388 210 000 - Fax +33 388 756 242 - contact@caldera.com